

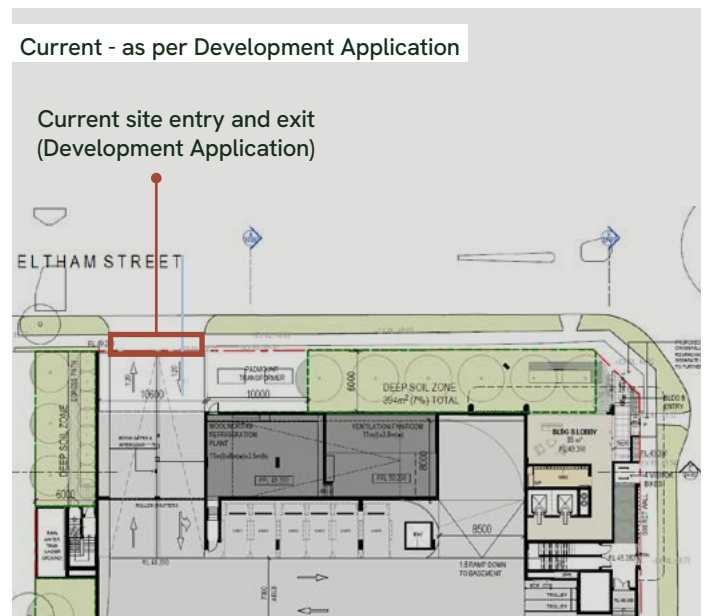
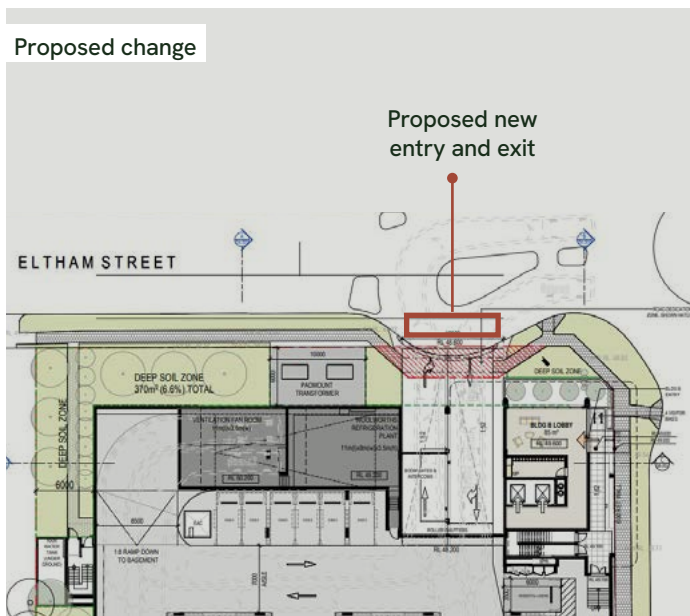
UPDATE – MARCH 2026

Our project team has reviewed the submissions received during the Public Exhibition phase from the Department of Planning, Housing and Infrastructure (DPHI), TfNSW, Council and the community, with several meetings held between the DPHI and Council over the last few months.

Key design changes have been made in response to these submissions with the below items directly responding to feedback and concerns raised by community:

- Moving the entry/exit driveway on Eltham Street closer to the Westminster Road roundabout with an improved turning circle** (solution requires dedicating land to Council to accommodate)

Key benefit - moves traffic further south along Eltham Street away from residential driveways, maintains parking numbers on Eltham Street with a turning facility integrated into the roundabout.



2 Increasing the loading dock size to accommodate a turntable

Key benefit - improves the operational capacity within the site to minimise conflict, queuing and congestion on Westminster Street and allowing trucks to exit the site at a 90-degree angle with improved sight lines.

3 Pedestrian & Public Domain

Creating a walkable, safe environment around the Victoria Road and Westminster Road corner is a key part of our refined proposal.

- **Wider footpaths** - We are proposing widened footpaths with improved visibility at the corner of Victoria and Westminster Roads.
- **Bus stop relocation** - We are working on a proposed relocation of the bus stop to improve commuter safety and traffic flow.

4 Bulk and Scale - Victoria Road

The building design has been updated to refine the built form along Victoria Road with increased setbacks on the upper levels.



PLANNING STATUS – WHAT'S NEXT

Following our response to Public Exhibition submissions, the DPHI will then either complete their assessment or request further information.



ADDITIONAL CHANGES

Additional changes have also been made to the design with a detailed response able to be viewed on the Departments website: <https://www.planningportal.nsw.gov.au/major-projects/projects/woolworths-gladesville-mixed-use-proposal>.

For easy reference search enter 'State Significant Development Woolworths Gladesville' as your internet search.



CONTACT

Contact: contact@mixed-use.au